



GAMING ENTERTAINMENT NEED TO KNOWS

You may have an idea of how gaming entertainment operates, maybe it's time to explore this a little more.

- Randomness
- How poker machines work
- What does RTP and Hold mean?
- What if your gaming entertainment stops being fun

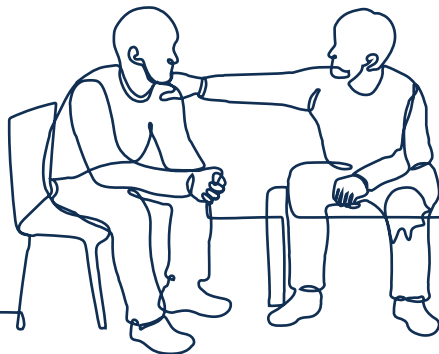
WHEN YOUR GAMING & ENTERTAINMENT STOPS BEING FUN

When you gamble for fun and entertainment, you have control over your time, money and energy. You feel positive and although you'd like to win, financial gain isn't your sole reason for gambling, so when you lose you know its simply the cost of playing a game of chance.

When gambling isn't fun, it can affect all areas of a person's life, including relationships with family and friends, health, and employment.

Time to Talk

Sometimes the best way to get support is to speak with someone about the challenges you are experiencing. A positive step is to start now, when calling 1800 BETSAFE you will have access to experienced counsellors who provide FREE assistance to Wests Group Macarthur patrons either over the phone or face to face counselling.



SELF, PARTIAL & MULTI EXCLUSION

Self Exclusion programs provide people the opportunity to take a significant break.

Engaging in a self exclusion, of any type is an indication of someone taking control of habits, time, behaviour and expenditure that is no longer in their best interest. There are a few options available, lets take a closer look at each of these.

Full Self Exclusion

A signed agreement by two parties, (the self excluding party and the service provider) for a designated period of time, whereby the person agrees to no visitation (gambling or otherwise) and the service provider agrees to assist in ensuring the self excluding party is not granted access.

Partial self exclusion

A signed agreement by two parties (the self excluded party and the service provider) for a designated period of time, whereby the person is prohibited from access to gaming areas but is granted access to other areas e.g. restaurants, shows etc

Multi Venue Exclusion

Multi venue self exclusion is a program that allows the self excluding party to self exclude from venues around where they work, live or socialize for a period of time.

If you would like to know more about self-exclusion options, ask to speak to the Duty Manager who can provide further information and assistance.



Promoting responsible Gambling

Bet with what you can afford...not your lifestyle
If gambling is creating a problem for you or someone you know phone

1800 BETSAFE

1800 238 723

This is a 24 hour FREE counselling service available for patrons of BetSafe venues.

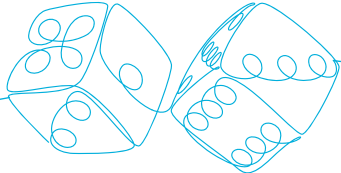
RANDOMNESS

Randomness means that no one can accurately predict what combinations or results will occur next. There are different methods of games played by chance which use different types of devices to make sure results are random. Examples include:

- Lotto
- Rolling dice
- Poker machines
- Spinning a roulette wheel

A series of wins can happen from time to time and that is part of the fun, but this should not be mistaken for the illusion you may be on a “winning streak” or have control and influence over the game or the outcome.

When you gamble, it may seem like you are in control of what is happening, but you're not... IT'S COMPLETELY RANDOM! That's what makes it fun!



HOW RANDOM IS THAT?

Chances of winning:

1st division Powerball	1: 76,676,600
1st division Oz Lotto	1: 45,379,620
Keno 10 spot jackpot	1: 8,911,711
Top Prize of Poker machine (max lines)	1: 7,000,000
Trifecta in a 13 horse race	1: 1,716

Other Random Events:

Struck by lightning (in Australia)	1: 8,145,060
Giving birth to twins	1: 300

HOW POKER MACHINES WORK

Poker machines tend to have a certain number of symbols per reel, digital technology allows them to have many more- some have 200 to 300 symbols with millions of possible combinations. The combination of symbols that pay out if you bet on them are called “paylines”.

All gaming machines, including poker machines contain a number generator that can generate thousands of numbers per second-each is associated with a different combination of symbols.

Whether you win or lose is determined by the random number generator in the exact instance you activate each play - if it matches the payline, you win.

Since each spin is independent and random to previous or future spins, it's impossible to predict what will happen on each play.

The possible payouts and the odds of winning depend on the type of gaming machine you are playing, the paylines you choose to play and the credits you wager.



“RETURN TO PLAYER” (RTP) “HOLD” AND JACKPOTS

Return to player (RTP)

Return to player is presented as a theoretical percentage of a game's wager that will be returned to the players in the form of winnings over the lifetime of the machine. In Australia the minimum RTP is 85%, typically the RTP percentage is between 87% - 92% depending on the State, venue provider, denomination and type of gaming machine played.

Hold

Hold can be viewed as the opposite, also presented as a much smaller percentage of a game's wager that a gambling service provider expects to hold from players over time. The service provider earns money from smaller amounts and multiple machines, over a prolonged period of time.

Jackpots (Stand alone jackpot & link jackpot)

There are two types of jackpots for poker machines:

Stand alone jackpot

Stand alone Jackpots only apply to a single machine and are usually displayed above the screen. The player of the machine is the only one eligible to win the jackpot. If the RTP is set at 90%, a smaller percentage (example 3%) will be contribute towards the jackpot pool and the remainder 87% to the regular game play.

Link jackpot

Here multiple machines are linked to the jackpot and any of these machines are eligible to win. As with stand alone, a percentage from each linked machine, contributes a small percentage of the RTP (from each machine's) regular game play.